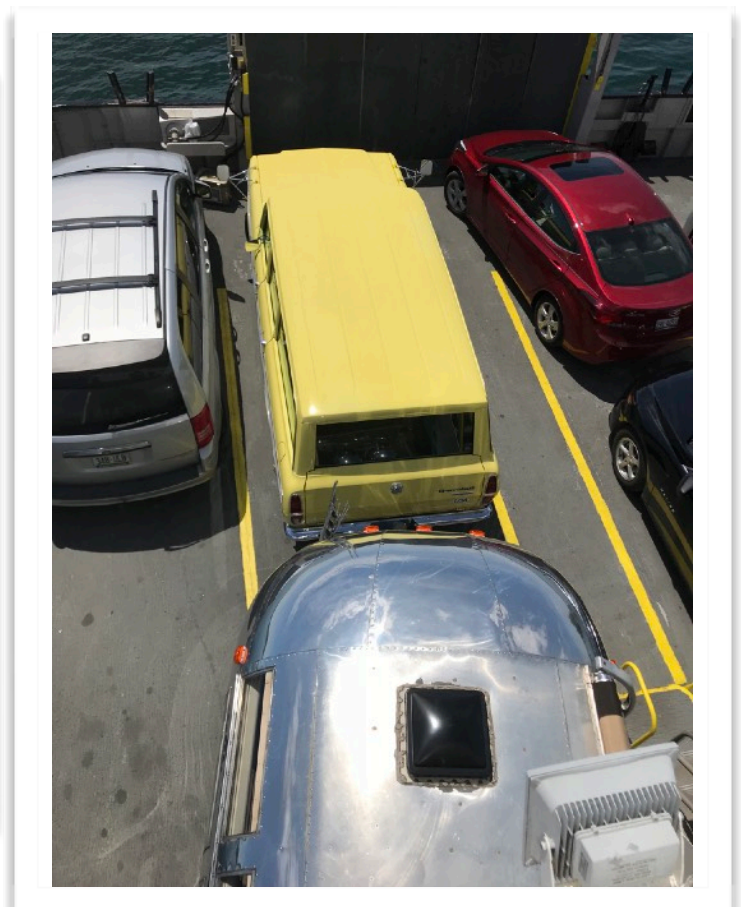


Flexibility is the key in an Airstream



These pictures are from Sandy & Ed Emerick (#4425) who wrote about the best laid plans of getting time away.

Our most recent trip was planned for Houghton MI, and we were to travel with our daughter Liz, and son-in-law Scott. This would be their first trip towing their Airstream!

Sunday morning, our ETD was 8am, and we were on schedule! Until Ed opened Facebook...Houghton and Hancock, plus surrounding areas were devastated from the previous night's torrential rain. One sensor owned by

Michigan Tech registered 1.75" of rain fell in ONE MINUTE! Roads were washed away, giant sink holes appeared throughout the city and the entrance to the campground was flooded or damaged. We spoke to the campground folks and learned how bad things really were. So Houghton was not to be.

As we sat around the kitchen...Scott suggested Washington Island and a new adventure was born. We got out the [yellow] 1975 International Travelall (tow vehicle) & hitched up the 1968 Airstream; Scott and Liz drove our Tundra with their 1959 Airstream... and we set off.

We had a beautiful drive up the Door Peninsula to the Washington Island Ferry. This was Scott's first taste of "negotiating" very tight spaces... he made it on and off the ferry just like a pro! Ed was sighing with relief ... because the next stop was the very tight, highly wooded campground on the island...but again there were no "new battle scars" put on the rig!

We spent 3 nights enjoying the north "of the tension line." We were there to enjoy a slow pace, no crowds and beautiful weather. We ate at Sailer's Pub on the pier; enjoyed an evening meal at Fiddler's Green, renewed our membership at the Bitters Club in Nelsen's Hall; sipped coffee at the Red Cup; touched beautiful yarn at Sievers School of Fiber Arts; went to Schoolhouse Beach & Rock Island...and just enjoyed driving around the island.

Returning to the mainland on the ferry... was just as tight as the trip over had been. Back on the "mainland" our next leg was ...Bailey's Harbor, for 2 nights.

In Bailey's Harbor we met Connie Worden, a new member of the unit. She had been staying there a few days and was leaving the next day. We saw Kurt and Mary Jorgensen (#6104) while at Door County Brewing; we visited with them while playing a game of Suspension. So nice to meet people as we travel.

Our last night out, we went ..."old school" and had dinner/drinks at the Florian II; our table overlooked the water and it was a full supper club experience!

Sandy writes... remember to keep your sense of humor, follow the spirit of the adventure ...and every trip will be memorable .

Safe and happy travels...

Ed and Sandy Emerick

Unit Updates & Rally Notifications

Cherry Picking Rally Hosts Ed/Sandy Emerick and Jane/Greg Hyer remind you to make reservation at the Bailey Harbor campground [920-839-2559] (**July 26-29, 2018**) AND pay your Rally fee through PayPal to confirm your intent. Jane wanted me to remind you to bring your Trash & Treasure for the Friday event; you can sell, barter or ditch/run travel related items.

Jane Carmichael (#3230) emailed a change in the starting site for the **Region 7 Rally Caravan** (August 27- September 2, 2018). It will be at the Bad River Casino in Odenah, WI; 3 sites have been reserved in Jane's name, so make your reservations there.

Kids and Grandkids Rally August 9-12, 2018 will be held in Wisconsin Dells at Wilderness Campground. It is Blackbeard's Shipwrecked Pirates Weekend. Come join in the Prate fun of cardboard boat races and much more.

Hosts: Jason & Kelly Staffin (reserved site: A32)
contact Kelly at: kelly@staffin.org

The **1800's Lake Superior Frontier History Rally** in Copper Harbor, MI will be held **August 23-27, 2018**.

Hosts: Greg & Jane Hyer (#4792): grhyer@wisc.edu

Calling all WBCCI members with hidden talents for a pick-up jam group...bring your instruments—guitar, ukulele, kazoo, tambourine.

A Note from Greg....



Club activities for the summer are beginning to heat up – just like the weather!

From a couple of emails – folks were still able to get sites for Cherry Picking in Baileys Harbor. Door County and 1800s Lake Superior Frontier History at Fort Wilkins, Copper Harbor, MI. For a site in Baileys, July 26-29, call 920-839-2559 or campnowwi@yahoo.com; for a site at Fort Wilkins, 8/23-27, midnrreservations.com (MI state park). There may also be sites for Kids & Grandkids Rally, August 9-12 – contact jason@staffin.org or kelly@staffin.org. At Baileys Harbor, we'll be swapping/sampling cherry recipes and having a sale/barter swap of trailer gear want to unload. I hear a certain 9" Garden Massacre Gnome may be available for the right deal. Jane Carmichael is leading a caravan after the MI event to the Region meeting in the Dakotas for those attending.

I hope your trailers have been rolling or will be soon. Several folks are showing the WI flag at the national meeting in Oregon. Others are traveling around Wisconsin – one lucky couple is even exploring Alaska after Oregon.

If you have any questions; good travel stories or need negotiating strategies for the rare Gnome, drop me a line, grhyer@wisc.edu. Travel on.